



# Olympic

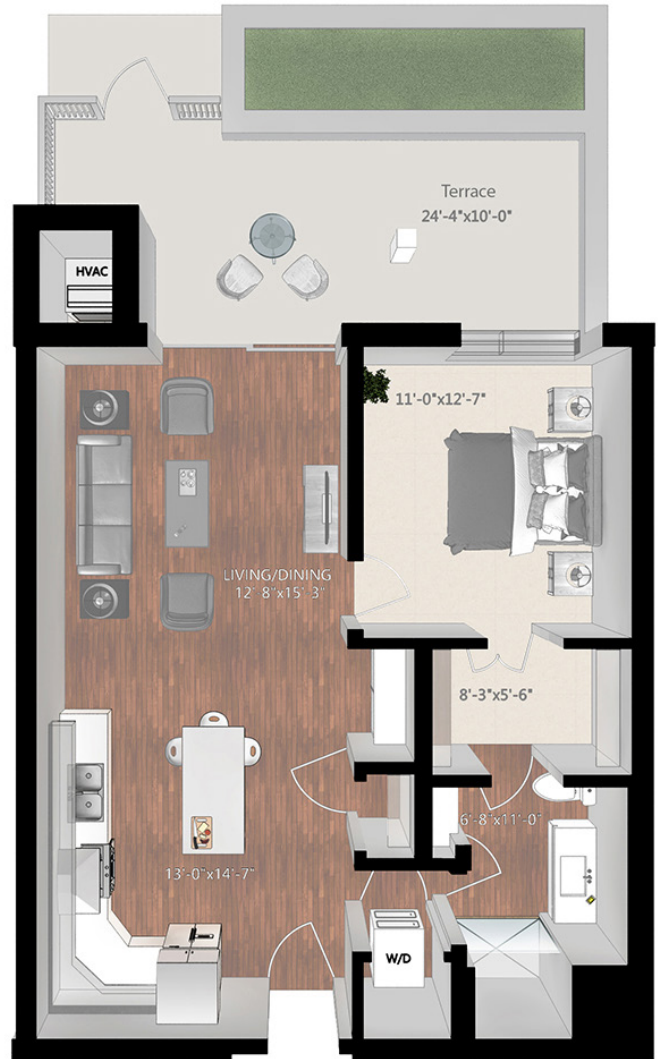
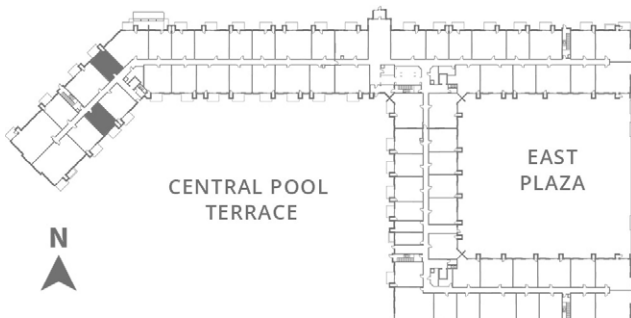
Building 2 | Level 1

Beds: 1

Baths: 1

Total Interior Sq Ft: 799

Total Livable Sq Ft: 1027



## Leasing Office:

P: 763-453-7600

E: [leasing@thereserveatarborlakes.com](mailto:leasing@thereserveatarborlakes.com)

11650 Arbor Lakes Parkway North,  
Maple Grove, MN, 55369.

---

---

---

---

---