

# Burgundy

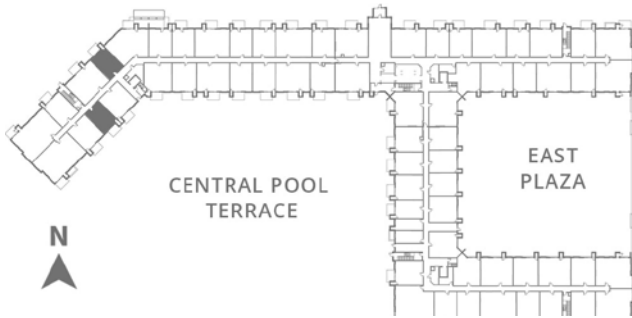
## Building 1 | Level 1 - 4

Beds: Alcove

Baths: 1

Total Interior Sq Ft: 675

Total Livable Sq Ft: 779



### Leasing Office:

P: 763-453-7600

E: [leasing@thereserveatarborlakes.com](mailto:leasing@thereserveatarborlakes.com)

11650 Arbor Lakes Parkway North,  
Maple Grove, MN, 55369.

---



---



---