



Monterey

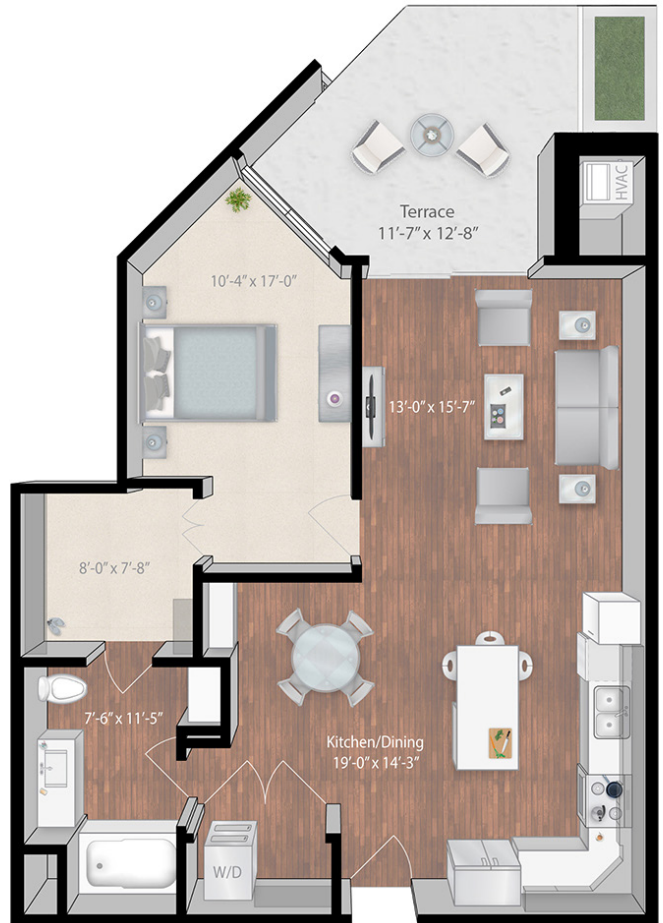
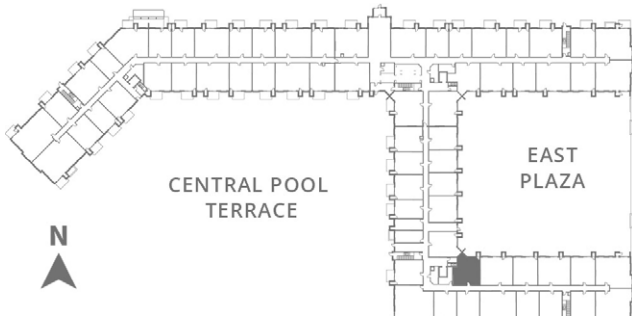
Building 1 | Level 1

Beds: 1

Baths: 1

Total Interior Sq Ft: 915

Total Livable Sq Ft: 1102



Leasing Office:

P: 763-453-7600

E: leasing@thereserveatarborlakes.com

11650 Arbor Lakes Parkway North,
Maple Grove, MN, 55369.
