



# St. George

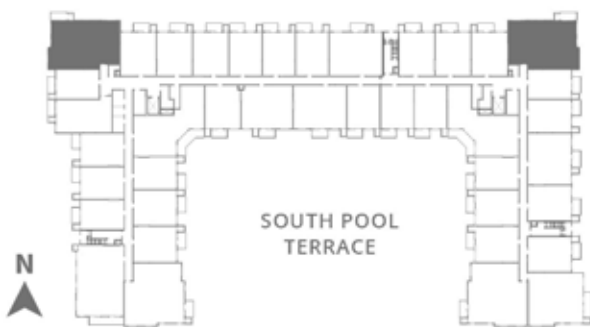
Building 3 | Level 1 - 4

Beds: 3

Baths: 2

Total Interior Sq Ft: 1614

Total Livable Sq Ft: 1684



## Leasing Office:

P: 763-453-7600

E: leasing@thereserveatarborlakes.com

11650 Arbor Lakes Parkway North,  
Maple Grove, MN, 55369.

---

---

---

---

---

---

---

---

---

---