

B6

Ash Lake

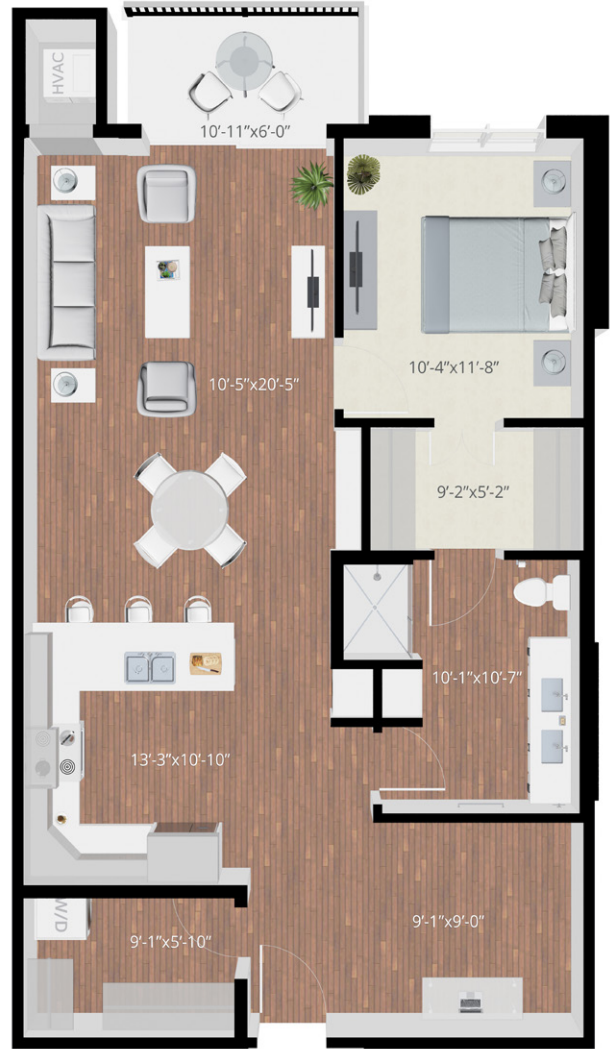
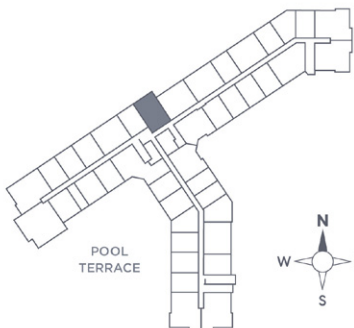
Building 4 | Level 2 - 5

Beds: 1

Baths: 1

Total Interior Sq Ft: 1006

Total Livable Sq Ft: 1072



Apartment # _____

Cabinet Color: _____ Direction facing: _____

Leasing:

E: leasing@thereserveatarborlakes.com

11650 Arbor Lakes Parkway North,
Maple Grove, MN, 55369.